



17th NCB International Conference on Cement, Concrete and Building Materials

06-09 December 2022, New Delhi, India



OPPORTUNITIES FOR CO₂ REDUCTION & HIGHER EFFICIENCY

Paper 057

Roger Meier* & Tamal K. Ghosh**

***GM Business Development FCT ACTech**

****Product Manager & Application Specialist ICON SCIENTIFIC SYSTEMS**

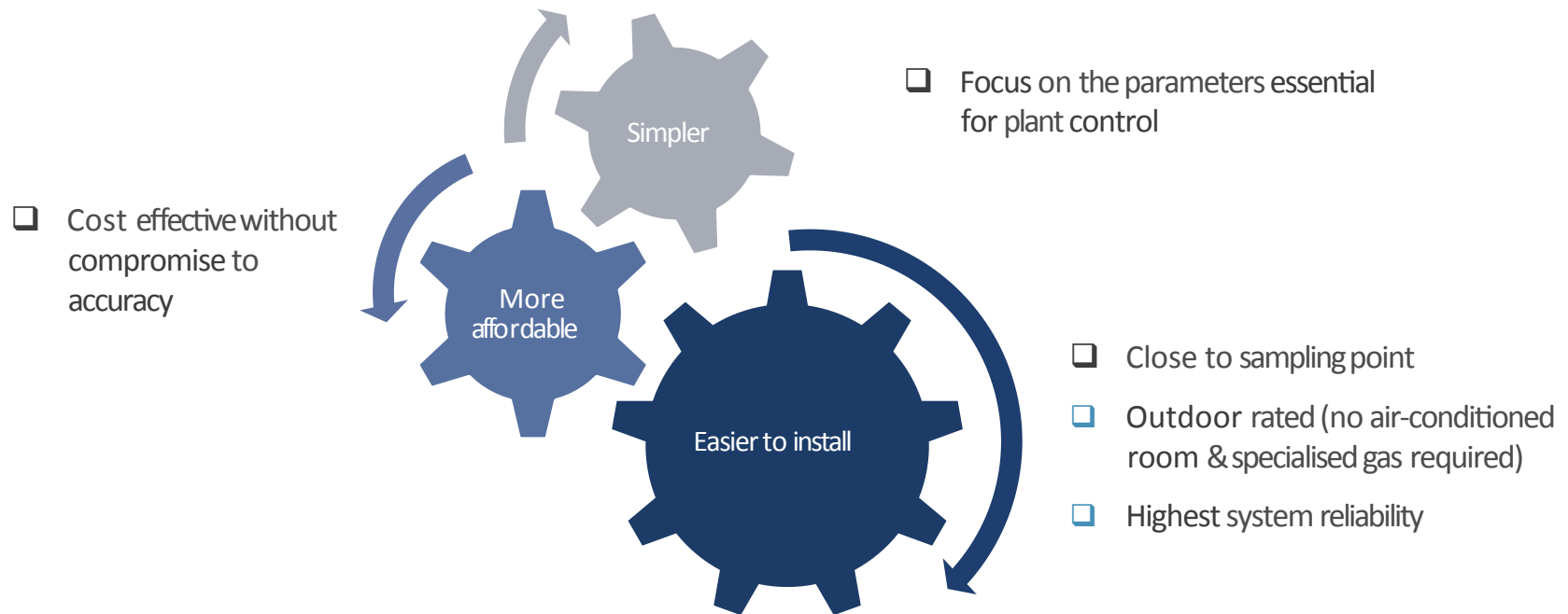
Outline

- ❑ FCT International
- ❑ X-Series Analyser
- ❑ Applications
- ❑ Case Study Raw Meal
- ❑ Summary

FCT International Group Companies



THE NEW GENERATION X-SERIES

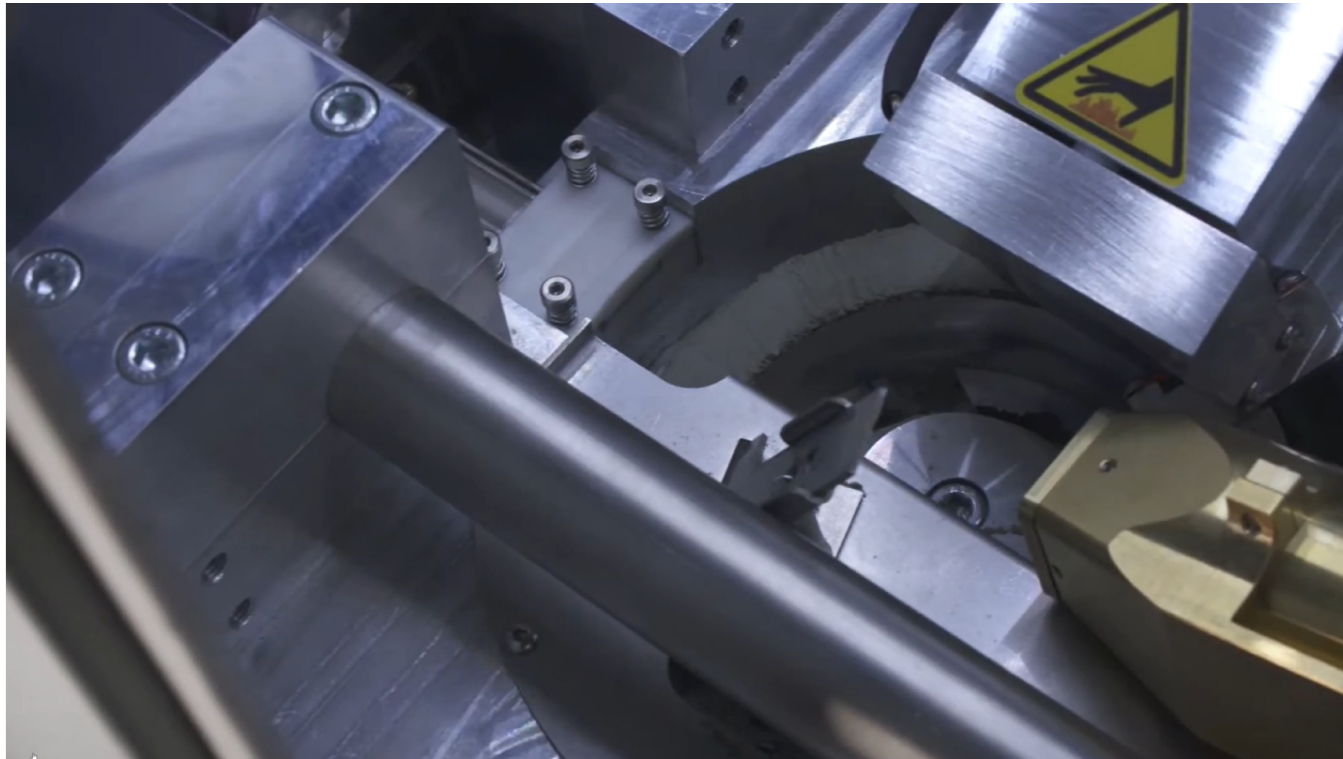


Common Features to X-Series Analysers

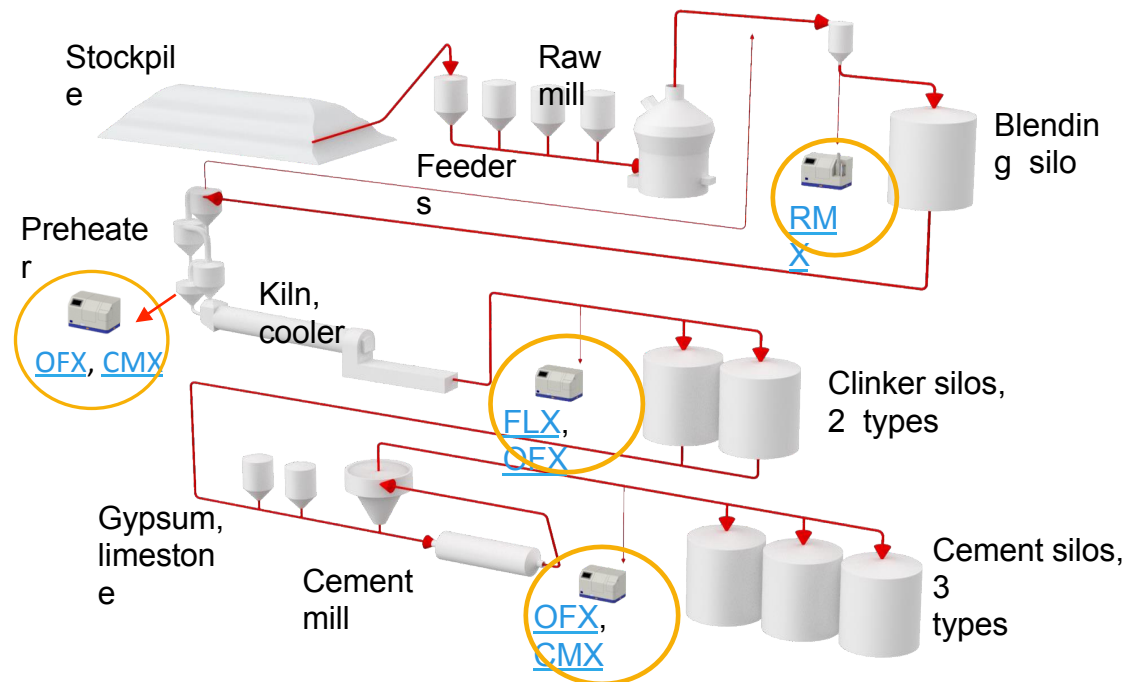
- Y Sample preparation free
- Y Ultra-fast batch or continuous operation including full integration/automation
- Y Coarse or fine material (built in grinder for coarse)
- Y Turntable sample presentation (continuous sample preparation robotics)
- Y Automated mixing
- Y More representative results, updated every 3-10 minutes
- Y Fixed detectors for outstanding reliability
- Y Easy installation close to the sample point
- Y Ruggedized, safe and built to last
- Y Minimal installation cost



How it works



X-Series Applications



X-Series Applications

FCT Models	Analysis System		Analysis
	XRD	HRTC XRF	
FLX	✓		Free Lime
FLX+	✓		Free Lime, C ₃ S
OFX	✓	✓	Elemental Analysis (Ca, Si, Al, Fe & S, Mg), Free Lime
OFX+	✓	✓	Elemental Analysis (Ca, Si, Al, Fe & S, Mg), Free Lime, C ₃ S
RMX		✓	Elemental Analysis and calculated LSF, other moduli, C ₃ S, C ₂ S, C ₃ A, C ₄ AF
CMX-Gamma	✓		Gypsum, Lime, Alumina, Pozzolan, Fly-Ash and Slag
CMX-Cement	✓	✓	Elemental Analysis (Ca, Si, Al, Fe & S, Mg), Free Lime, C ₃ S, Gypsum, Pozzolan, Fly-Ash and Slag

HRTC XRF - High Resolution Real Time Continuous XRF (capability to measure all elements in the range Na-U)



X-Series RMX



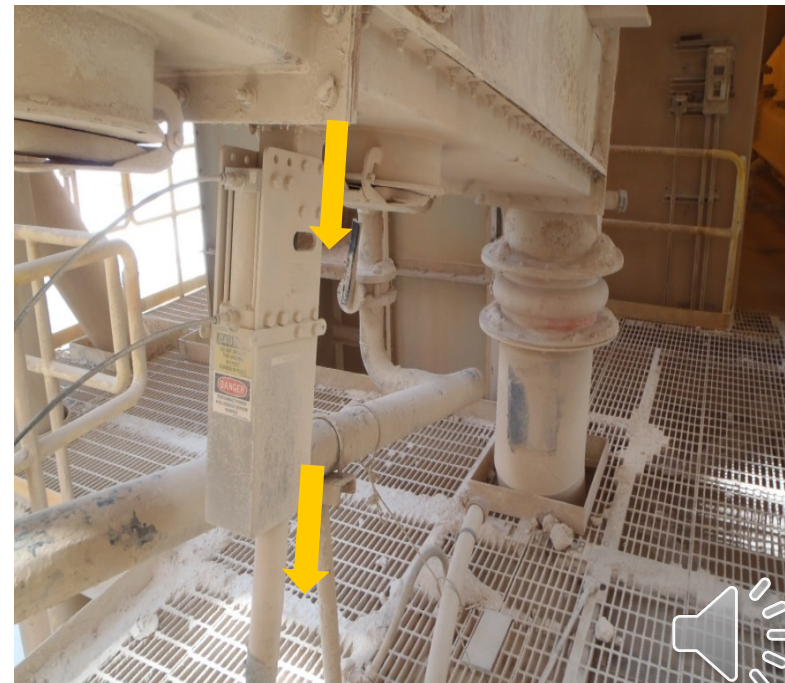
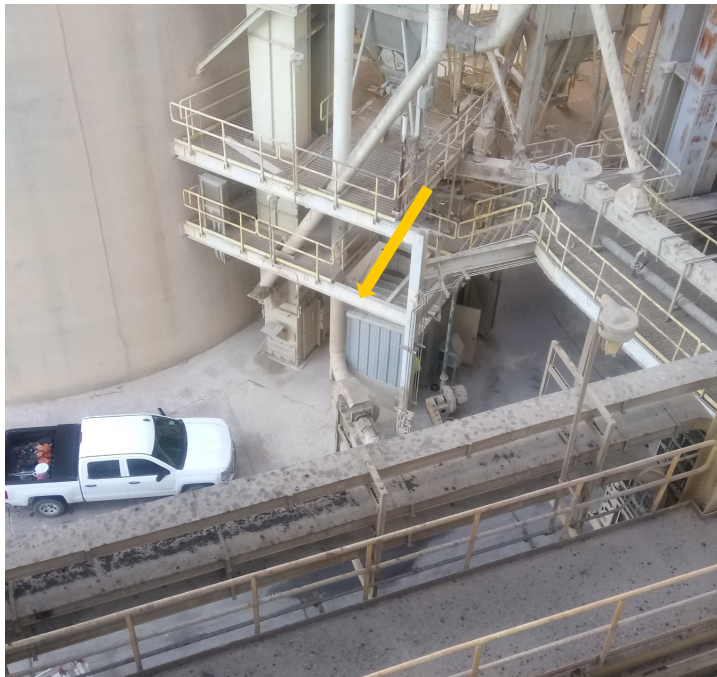
RMX Raw Meal Analyser



- γ Large, highly representative sample intake
- γ Continuous operation with 20 complete data points per hour
- γ Installed in a better location and ruggedized for on-line use
- γ Powered by ClassX proprietary software
- γ Raw mix control
- γ Complete raw meal analysis
- γ Elemental analysis: Si, Fe, Al, Ca, S, Mg and more
- γ Provides accurate elemental data critical for calculation of properties important for raw mix control: LSF, C3S
- γ Smart, automated process that is intuitive to use

Raw Meal is Sampled after the Raw Mill

The existing air slide sampler is used to feed the at-line analyzer located below



The plant PLC controls the system

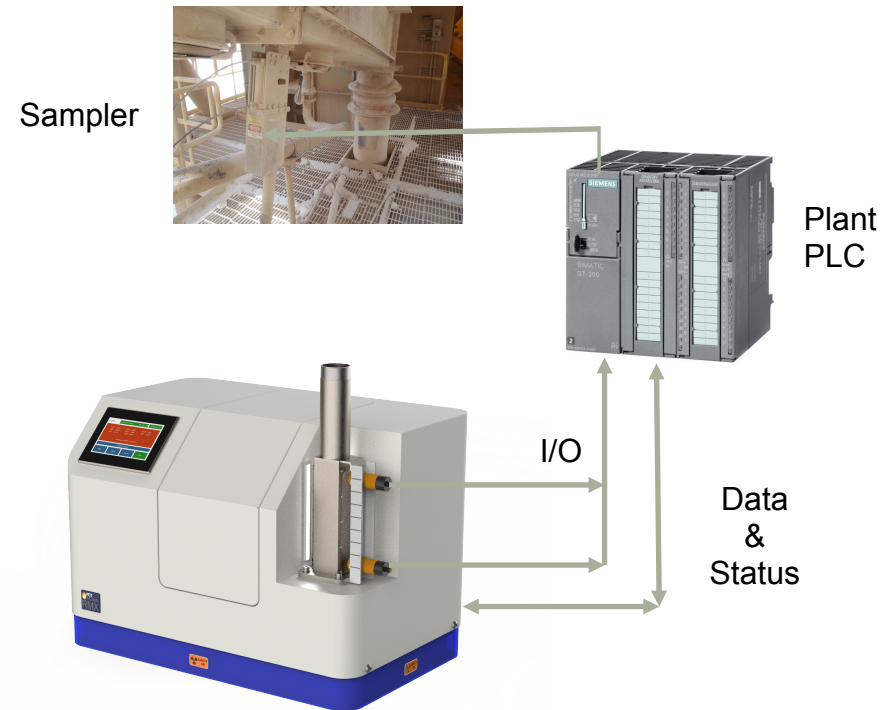
The plant PLC monitors the status of the system

Plant PLC starts and stops the sampler etc based on analyser demand

Analysis results are sent to the PLC via network

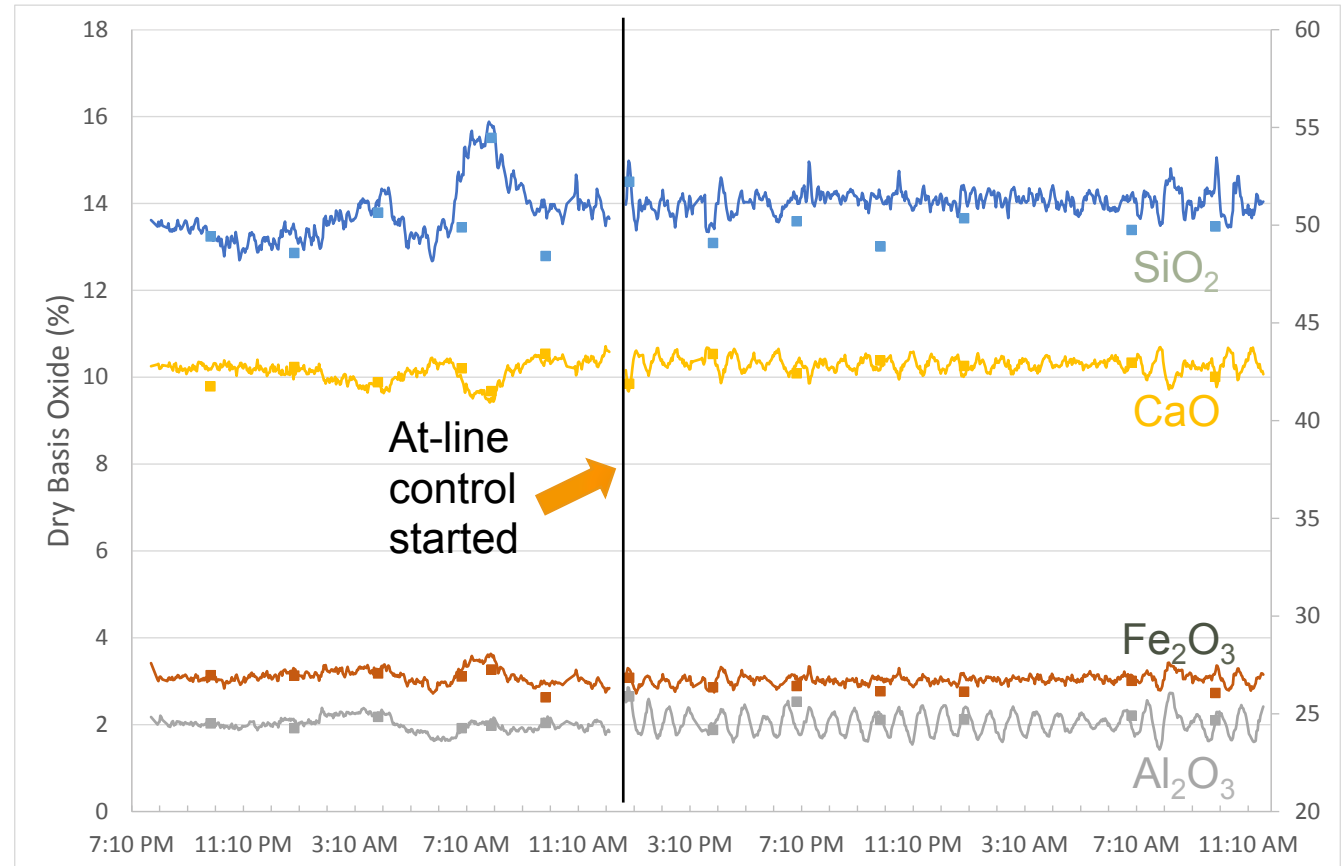
Results are compared to targets

Automatic adjustments to feeders are made...



Results – At-line results of stockpile/heap change

- Robotic laboratory testing every 3hrs
- Added at-line 2-minute data!
- At-line control is started for the first time
- Immediate smoothing but...
- Control loops need tuning.

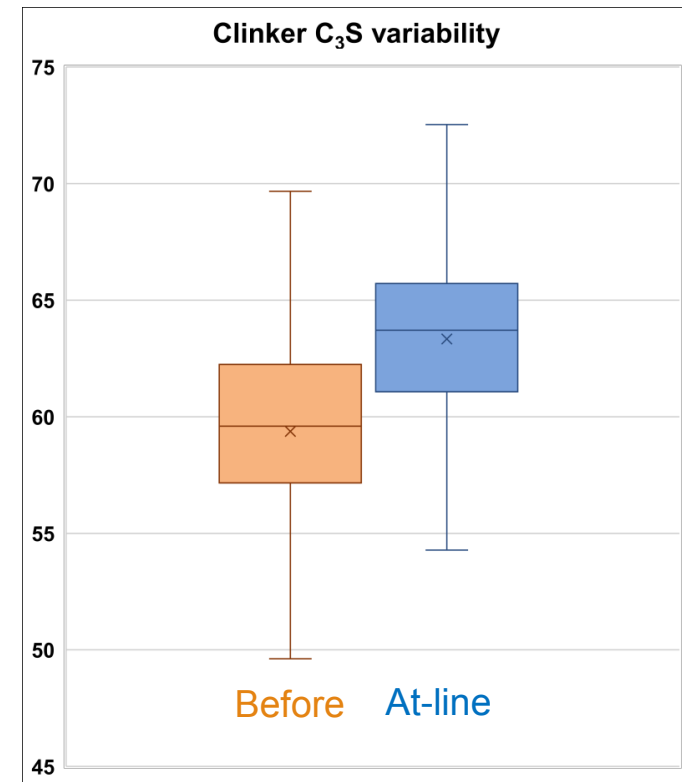


Results – Clinker C₃S results

- Kiln is more stable with at-line raw mix control
- Less high free lime excursions
- Able to increase C₃S target for higher strengths

C ₃ S	Before	At-line
Target	60%	64%
Std Dev	4.4%	3.6%

Box and whisker plot.
- 50% of values in box
- 50% of values on lines
- x is mean
- Mid line is median



Summary

X-Series Analyser Benefits:

- Y Lower fuel cost
- Y Less energy requirements
- Y Reduced additive cost
- Y Less wear and tear on refractory (reduced maintenance and increased life)
- Y Less homogenization required
- Y Reduced kWh/t in cement milling
- Y Easier clinker grinding
- Y Back-up capability for lab equipment
- Y Low maintenance and cost of ownership



THANK YOU



Contact in India

Icon Scientific Systems Pvt. Ltd.

Address

- Kolkata
- Astra Tower, ASO-206, 2nd Floor,
Akankha More, New Town, Kolkata -
700161

Contact

- [+91- 33-4061 4196](tel:+91-33-40614196)
- +91-33-4062 0846
- sales@iconscientificsystems.com

www.iconscientificsystems.in

Please visit us at booth D30



FCTACTECH.COM

ACTECH@FCTINTERNATIONAL.COM